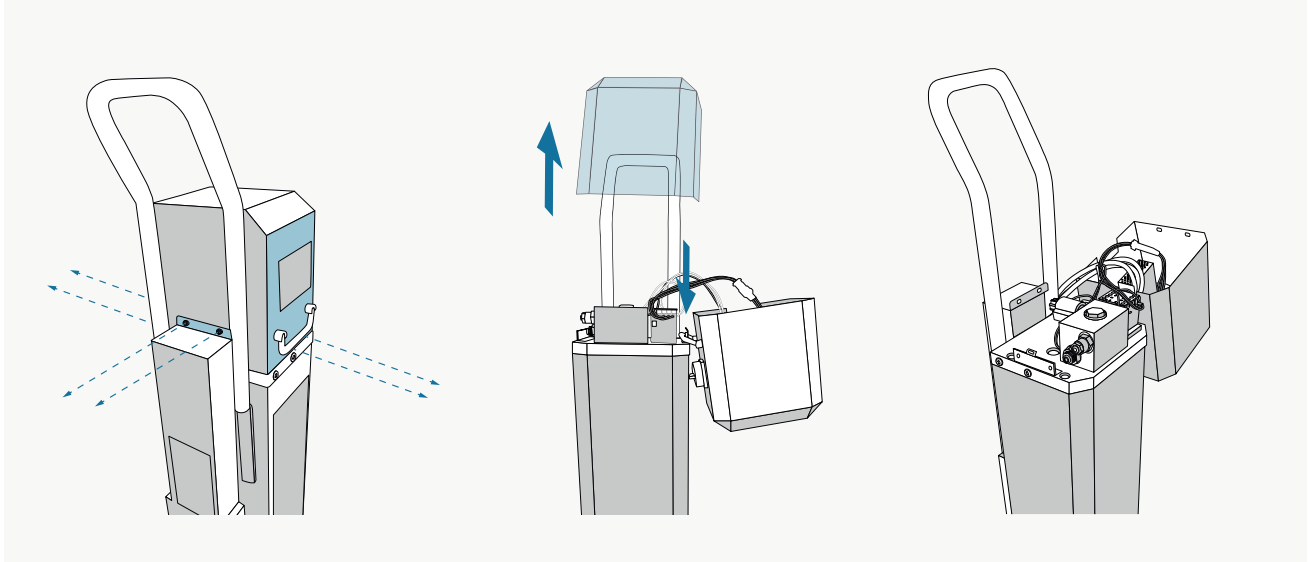


How do I change the lifting or lowering speed of the Krömer scissor lift?

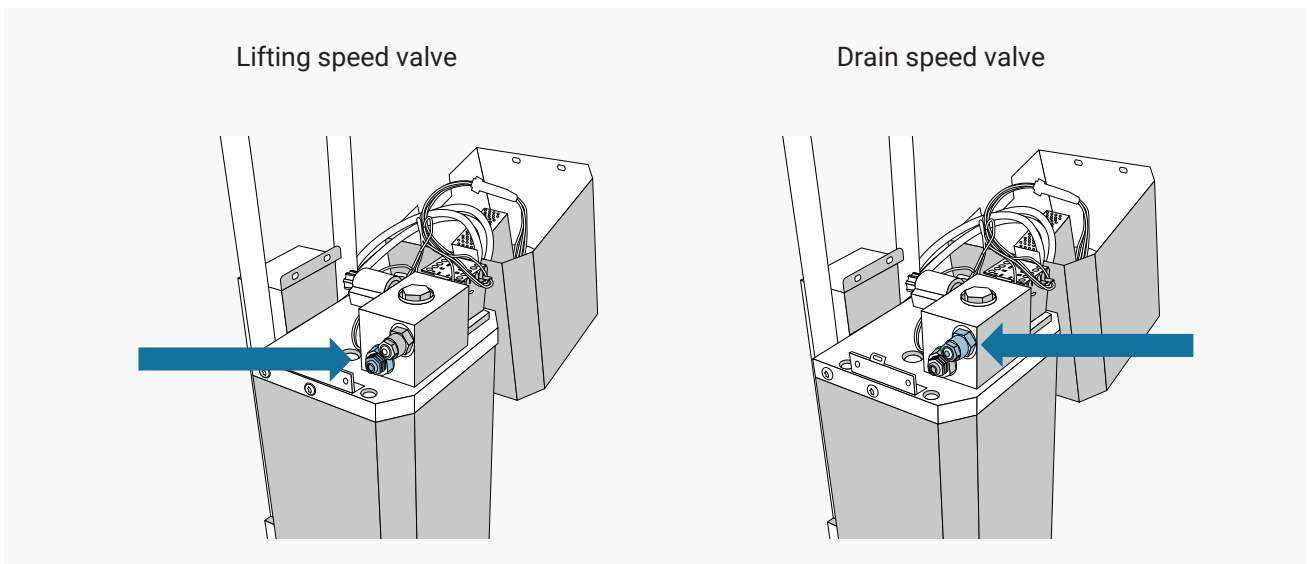
Artikel-Nr.: X20, X21, X25, X26, X28, X29
Hersteller: Krömer
EAN-Code: 0757284116247
0738964856981
0757284116230
0757284118838
0738964856974
0757284117510

1 Open the control panel



Loosen the screws on the side of the control panel and carefully loosen the cover. Hook the cover sideways into the control panel to have open access to the required screws.

2 Change the lifting and lowering speed



To increase the lifting speed, you have to turn the lower screw counterclockwise (clockwise to raise the platform more slowly). To increase the descent speed you need to turn the top screw counterclockwise (clockwise to slow down the stage).



After the change, the scissor lifts either move up or down more quickly